



Clean Air Zones (CAZ) Guidance

Introduction to Clean Air Zones

A Clean Air Zone (CAZ) is defined as an area where targeted action is being taken to improve air quality. It can be confined to a single road or a part of a town or city. This update provides the current status with regards to the implementation of CAZs across the UK.

Each CAZ is devolved from Central Government and is managed by the relevant Local Authority. This means that there are inconsistencies with regards to affected vehicles from one Local Authority to another. In most cases, HGVs and vans are affected by CAZs but cars and other types of vehicles can also be affected.

What time of the day will CAZ charges apply?

Charges for driving in a CAZ usually apply daily from midnight to midnight, 7 days a week, all year round. Usually, once a charge has been paid, you may enter, leave and re-enter that CAZ during the 24-hour charging period without having to pay again.

In some cases, you might need to pay twice if you enter and leave across two 24-hour periods as defined by the CAZ. For example, entering a CAZ at 18.00hrs and leaving at 02.00hrs the following day, may incur two charges.

How do I know if my vehicle is compliant?

Owing to the inconsistencies from one CAZ to another, you are advised to check if your vehicle is compliant prior to travelling into an active CAZ. You can do this by clicking on the links provided.

Some of my staff travel to and from site by car or pickup truck – are they affected?

Bath is the only active CAZ which specifically mentions charges for pickup trucks, but many are already or intend to make charges for cars.

As above, you are advised to check all vehicles, including cars and pickup trucks before you travel.

continued...

How do I know which area is affected by each CAZ?

The links provided below direct you to each CAZ where more information is provided about areas affected, vehicles affected and how to pay charges if required.

Active schemes

Bath

Non-compliant cars:	N/A
Non-compliant LGVs:	£9
Non-compliant HGVs:	£100
Start date:	15th March 2021
Operational hours:	24/7
Further information:	https://bit.ly/368pKmj

Birmingham

Non-compliant cars:	£8
Non-compliant LGVs:	£8
Non-compliant HGVs:	£50
Start date:	14th June 2021
Operational hours:	24/7
Further information:	https://bit.ly/3jyQDrz

London (ULEZ)

The Ultra-Low Emission Zone (ULEZ) has expanded to the North Circular Road (A406) and South Circular Road (A205). The Circular Roads themselves are not included in the zone. You will also need to pay a £15 daily charge if you drive within the Congestion Charge zone from 07:00–22:00. If your vehicle does not meet ULEZ standards, you must also pay the ULEZ charge.

Non-compliant cars:	£12.50
Non-compliant LGVs:	£12.50
Non-compliant HGVs:	£100
Start date:	25th October 2021
Operational hours:	24/7
Further information:	https://bit.ly/3jEarJV

London (LEZ)

The Low Emission Zone (LEZ) covers most of Greater London. The LEZ is separate from the Ultra-Low Emission Zone (ULEZ) which is in place in Central London.

Non-compliant cars:	N/A
Non-compliant LGVs:	£100
Non-compliant HGVs:	£100 – £300

Advanced stages of planning or implementation

Bradford

Non-compliant cars:	N/A
Non-compliant LGVs:	£9
Non-compliant HGVs:	£50
Start date:	5th January 2022
Operational hours:	24/7
Further information:	https://bit.ly/3AjQe26

Bristol

Non-compliant cars:	£9
Non-compliant LGVs:	£9
Non-compliant HGVs:	£100
Start date:	29th October 2021
Operational hours:	24/7
Further information:	https://bit.ly/3yk4TZw

Cardiff

A charging zone for non-residents regardless of vehicle or use

Cars, LGVs and HGVs:	£2
Start date:	2024
Operational hours:	TBA
Further information:	https://bbc.in/3hasAh2

Gateshead

Non-compliant cars:	N/A
Non-compliant LGVs:	£12.50
Non-compliant HGVs:	£50
Start date:	July 2022
Operational hours:	24/7
Further information:	https://bit.ly/368KXfZ

Manchester

Non-compliant cars:	N/A
Non-compliant LGVs:	£10
Non-compliant HGVs:	£60
Start date (HGVs):	30th May 2022
Start date (LGVs):	31st May 2023
Operational hours:	24/7
Further information:	https://bit.ly/2SGYQPg

Advanced stages of planning or implementation

Newcastle

Initially planned for January 2021 but delayed.

Non-compliant cars:	N/A
Non-compliant LGVs:	£12.50
Non-compliant HGVs:	£50
Start date:	July 2022
Operational hours:	24/7
Further information:	https://bit.ly/3x96Zep

North Tyneside

Initially planned for January 2021 but delayed.

Non-compliant cars:	N/A
Non-compliant LGVs:	£12.50
Non-compliant HGVs:	£50
Start date:	July 2022
Operational hours:	24/7
Further information:	https://bit.ly/2SGYZIM

Oxford (ZEZ)

Oxfordshire County Council and Oxford City Council propose a Zero Emission Zone (ZEZ).

Non-compliant cars:	£2 – £10
Non-compliant LGVs:	£2 – £10
Non-compliant HGVs:	£2 – £10
Start date:	2022
Operational hours:	7am – 7pm daily
Further information:	https://bit.ly/3692Tad

Portsmouth

Non-compliant cars:	N/A
Non-compliant LGVs:	N/A
Non-compliant HGVs:	£50
Start date:	Late 2021
Operational hours:	24/7
Further information:	https://bit.ly/3Anfq84

Sheffield

Non-compliant cars:	N/A
Non-compliant LGVs:	£10
Non-compliant HGVs:	£50
Start date:	Plans on hold
Operational hours:	4/7
Further information:	https://bit.ly/366NLdl

Stoke-on-Trent

Non-compliant cars:	N/A
Non-compliant LGVs:	£9 – £35
Non-compliant HGVs:	£9 – £35
Start date:	TBA
Operational hours:	TBA
Further information:	https://bit.ly/3qHG472

Schemes abolished

Leeds

Plans for a CAZ have been abolished.

Leicester

Plans for a CAZ have been abolished.

Southampton

Plans for a CAZ have been abolished.

York

Only certain busses that enter the inner ring road more than 4 times per day are affected.

Non-compliant cars:	N/A
Non-compliant LGVs:	N/A
Non-compliant HGVs:	N/A
Start date:	February 2021
Operational hours:	24/7
Further information:	https://bit.ly/3jEv5tA

Schemes under consideration

CAZs are being considered in several other towns and cities across the UK – including those listed below. We will update this document as details become available.

Aberdeen

Cambridge

Dundee

Edinburgh

Glasgow

Liverpool

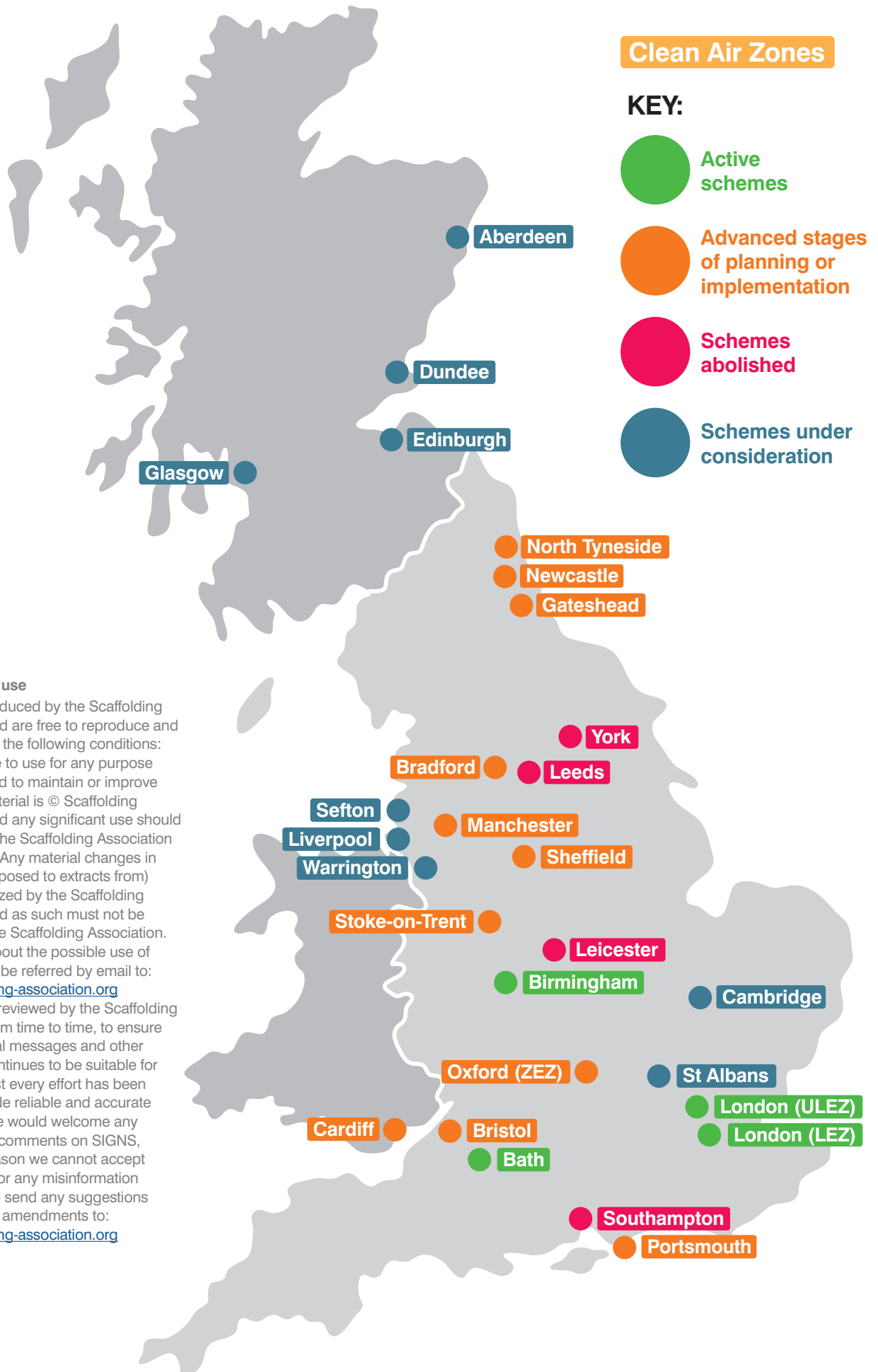
Sefton

St Albans

Warrington

continued...

SCAFFOLD INDUSTRY GUIDANCE NOTES



Conditions of use

SIGNS are produced by the Scaffolding Association and are free to reproduce and use, subject to the following conditions: SIGNS are free to use for any purpose that is designed to maintain or improve safety. The material is © Scaffolding Association and any significant use should acknowledge the Scaffolding Association as the source. Any material changes in content (as opposed to extracts from) are not authorized by the Scaffolding Association and as such must not be attributed to the Scaffolding Association. Any queries about the possible use of SIGNS should be referred by email to: info@scaffolding-association.org SIGNS will be reviewed by the Scaffolding Association from time to time, to ensure that the general messages and other information continues to be suitable for purpose. Whilst every effort has been made to provide reliable and accurate information, we would welcome any corrections or comments on SIGNS, and for this reason we cannot accept responsibility for any misinformation posted. Please send any suggestions for changes or amendments to: info@scaffolding-association.org